

## FORD TRANSIT\_CARGO VAN\_Single Side Door Config. Legend's Heavy Duty Side and Rear Steel Scuff Plates

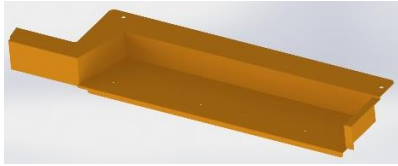
### INSTALLATION INSTRUCTIONS

Legend Part # : F709-151-1011

**NOTE :** Fasteners should be tightened to torque specification, wherever specified.

**PARTS REQUIRED:**

- 7. Heavy Duty Passenger Side Scuff / Sill  
Part Number : S1 (F706-151-1011)  
Quantity : 1



- 2. Side Scuff Spacer  
Part Number : 000-135-6441  
Quantity : 1



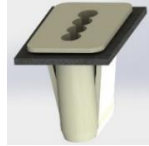
- 3. Heavy Duty Rear Scuff / Sill (foam padded)  
Part Number : S2 (F708-151-1011)  
Quantity : 1



"Top View"

"Bottom View"

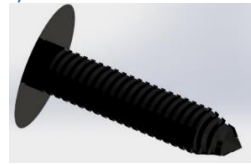
- 4. Rear Step Screw Insert\*\*  
Part #:F70-082-0001\_Rear step screw insert  
Quantity : 5



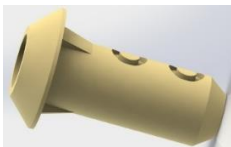
- 5. Flathead #10 screws (Torx head) \*\*  
Part Number : FS2-063-125  
Quantity : 9



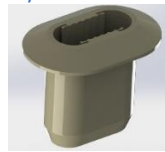
- 6. Side Step Push-In Rivet\*\*  
Part#:F70-082-0001\_Side step push-in rivet  
Quantity : 2



- 7. Side Step Push-In Insert\*\*  
Part#:F70-082-0001\_Side step push-in insert  
Quantity : 2



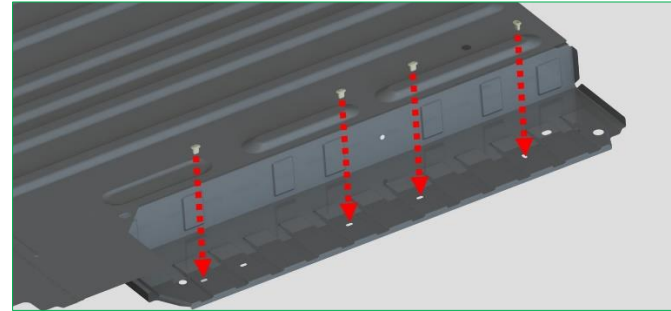
- 8. Side Step Screw Insert\*\*  
Part#: F70-082-0001\_Side step screw insert  
Quantity : 4



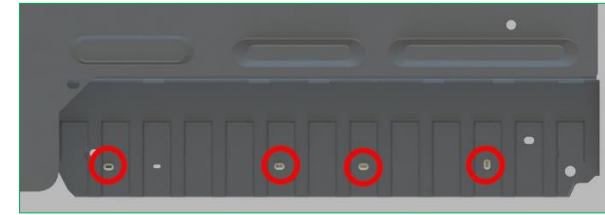
**\*\* Parts 4 to 8 come in a pre-packaged hardware bag.**

**INSTRUCTIONS:**

1. Remove all the plastic trim present at the side and rear steps of the vehicle
2. Insert the four 'side-step screw inserts' (Part number : F70-082-0001\_Side-step screw insert), at the four locations shown in the picture below.



"Location of the four Side Step Screw Inserts"



"Top view of the installed four Side Step Screw Inserts"

3. Install the side scuff spacer (Part number : 000-135-6441) as shown in the picture below.



"Location of the Side Scuff Spacer"

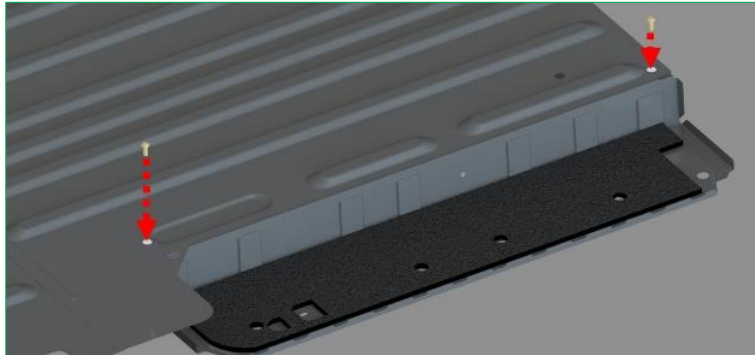
4. Place the heavy-duty side sill (Part number : F706-151-1011) in the vehicle by aligning the four holes highlighted in blue color with the inserts installed in step # 2, as shown in the picture below.

Mark the locations of the two holes highlighted in 'red color', on the vehicle's metal floor and remove the sill from the vehicle.



"Locating positions of the two holes on the vehicle's metal floor"

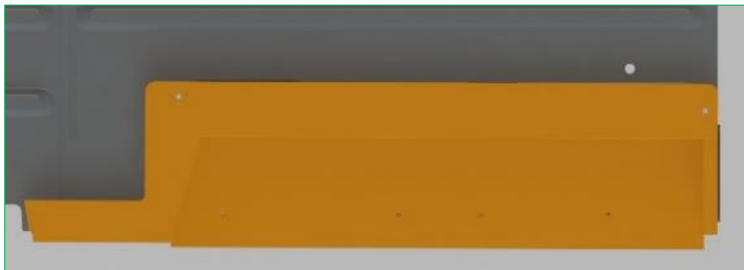
5. Carefully drill holes of 0.350" diameter on the vehicle's metal floor at the two locations marked in step # 4.
6. Insert the two 'side-step push-in rivet inserts' (Part number : F70-082-0001\_Side-step push-in rivet insert), at the two locations on the van's metal floor as shown in the picture below.



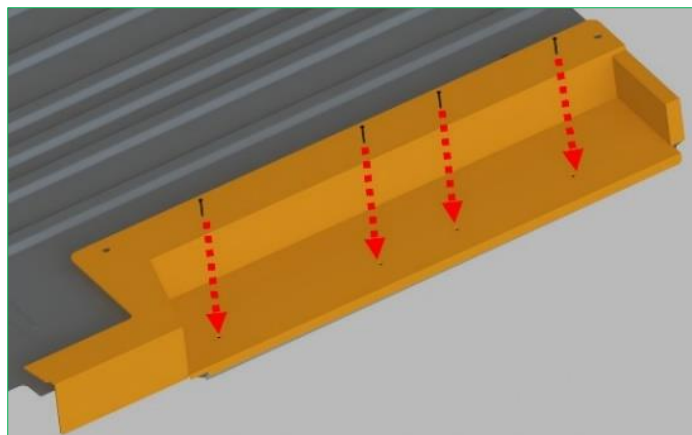
*"Location of the two Side Step Push-In Inserts"*

7. Position the heavy-duty side sill (Part number : F706-151-1011, or S1) in the vehicle, and fix it in- place by using four flat head #10 screws (Part number : FS2-063-125), at the locations as shown in the pictures below.

**NOTE :** Apply 2.5 N-m of torque to each screw.

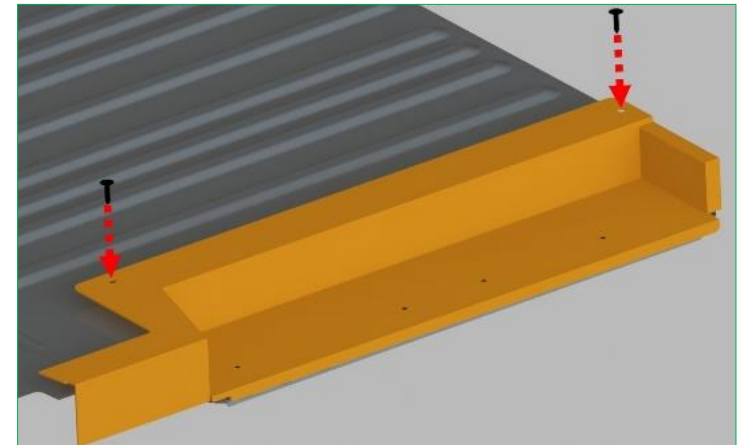


*"Heavy-duty side sill positioned in the vehicle"*



*"Fixing the side sill using four flat head #10 screws"*

8. Install the two side push-in rivets (Part number : F70-082-0001\_Side step push-in rivet), at the locations shown in the picture below.



*"Installing the two side step push-in rivets"*

9. Remove the grommet present at the access-point to the spare tire, if applicable, as shown below.



*"Removal of the grommet"*

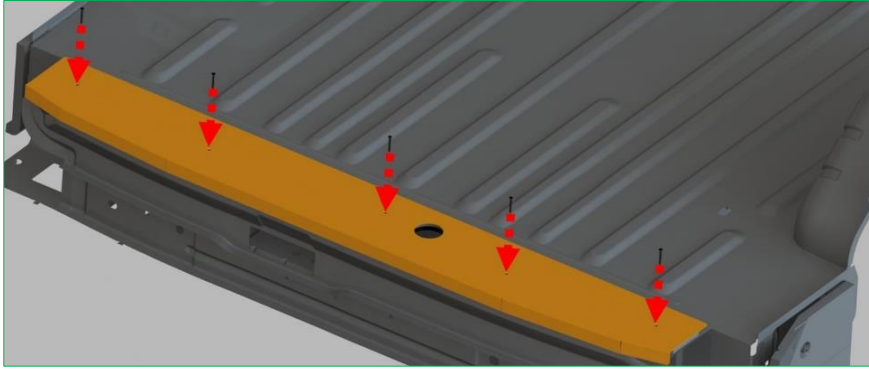
10. Insert the five 'rear-step screw inserts' (Part number : F70-082-0001\_Rear step screw insert), at the five locations shown in the picture below.



*"Location of the five rear step screw inserts"*

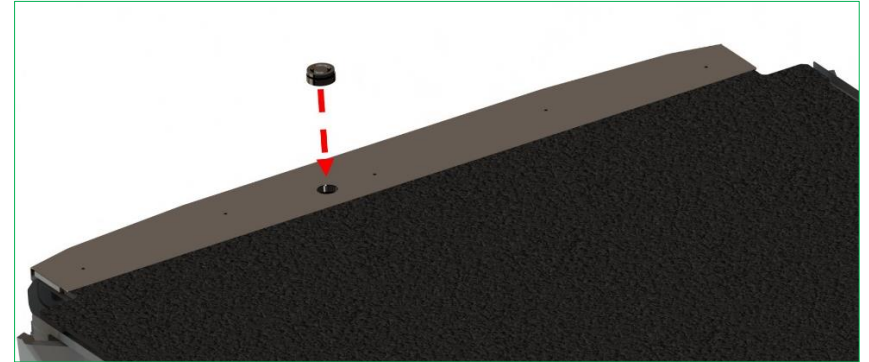
11. Position the heavy-duty rear sill (Part number : F708-151-1011, or S2) by aligning the five holes on the sill with the inserts installed in step # 10.
12. Install five flat head #10 screws (Part number : FS2-063-125), at the locations shown in the picture below to fix the rear sill in-place.

**NOTE :** Apply 2.5 N-m of torque to each screw.



*"Installing five flat head #10 screws to secure the rear sill"*

13. Re-install the grommet that is removed from the vehicle in Step # 9, if applicable. The rubber plug is to be installed on the rear sill as instructed below.



*"Re-installing the grommet on the rear sill"*