

FORD TRANSIT 148" WB Extended_CARGO VAN_Single Side Door Config.

Legend Heavy Duty Rail Joint Floor, and Side and Rear Sills KIT

Engineering Part # : AMJK4J-455A16-CB

Service Part # : VJK4Z-9913042-CA

INSTALLATION INSTRUCTIONS

NOTES:

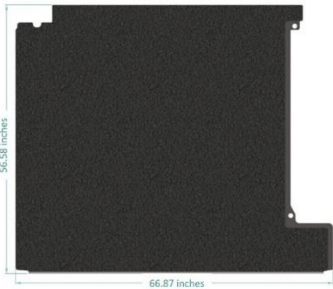
*Necessary safety precautions are to be taken when working with stabiligrip floor as it contains fiberglass material.

* Fasteners should be tightened to torque specification, wherever specified.

PARTS REQUIRED:

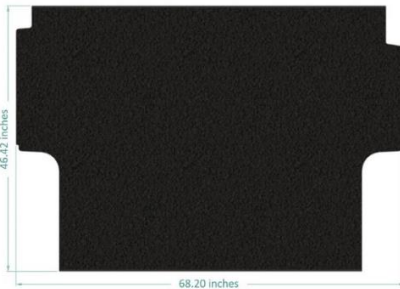
1. Floor Piece A

Part Number : F135-6441-A
Quantity : 1



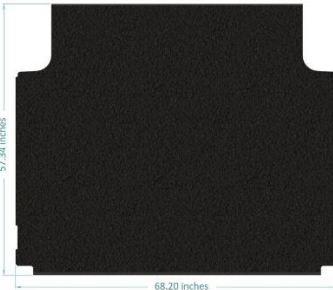
2. Floor Piece C

Part Number : F135-6441-C
Quantity : 1



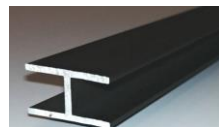
3. Floor Piece E

Part Number : F135-6441-E
Quantity : 1



4. Front H-Track (62.125" Long)

Part Number : H1
Quantity : 1



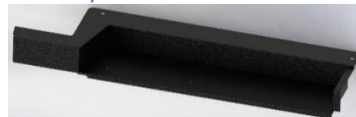
5. Rear H-Track (53.125" Long)

Part Number : H2
Quantity : 1



6. Heavy-Duty Passenger Side Scuff / Sill

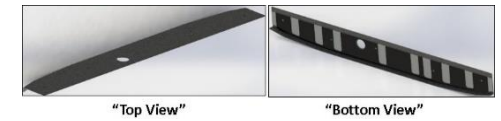
Part Number : S1 (F706-151-1011)
Quantity : 1



7. Side Scuff Spacer
Part Number : 000-135-6441
Quantity : 1



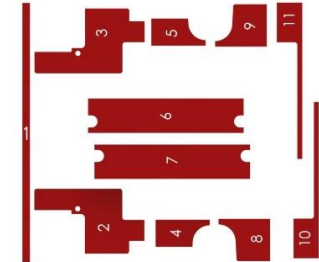
8. Heavy-Duty Rear Scuff / Sill (foam padded)
Quantity : S2 (F708-151-1011)
Quantity : 1



9. Anti-Rattle Foam (adhesive backed)*
Part Number : FEV-033
Total length : 114 inches



10. EVA Spacer Foam(adhesive backed)[Rev. 2]*
Part Number : EVA_09A
Quantity : 11 pieces (IN BLACK COLOR)



11. Flathead #10 screws (Torx head)**
Part Number : FS2-063-125
Quantity : 9



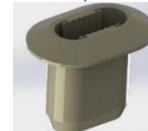
12. Side Step Push-In Rivet**
Part#:F70-082-0001_Side step push-in rivet
Quantity : 2



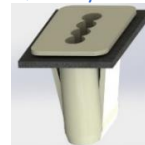
13. Side Step Push-In Insert**
Part#:F70-082-0001_Side step push-in insert
Quantity : 2



14. Side Step Screw Insert**
Part#: F70-082-0001_Side step screw insert
Quantity : 4



15. Rear Step Screw Insert**
Part#:F70-082-0001_Rear step screw insert
Quantity : 5



16. Glue tube
Part#: 000-015-OS2
Quantity : 1

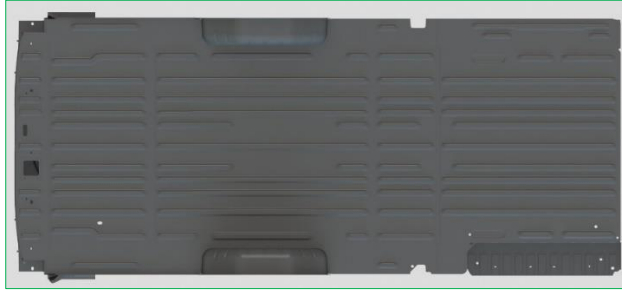


* Parts 9 to 10 come in a pre-packaged bag labelled "EVA_09A".

** Parts 11 to 15 come in a pre-packaged hardware bag.

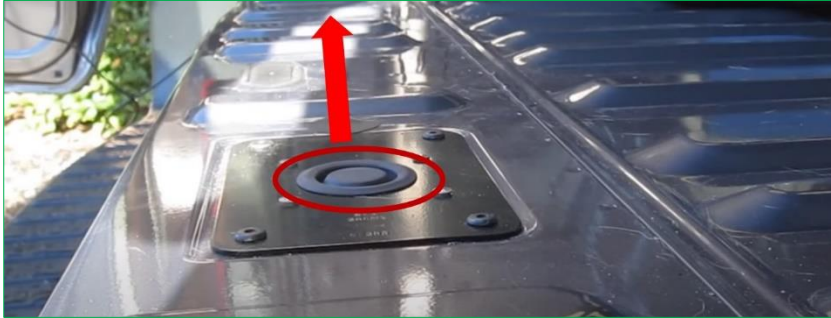
INSTRUCTIONS:

1. Remove all the 'D-Rings' installed in the vehicle.
Also remove plastic side and rear step trims and the vinyl-flooring, if any present in the vehicle.



"Vehicle's bare metal floor"

2. Remove the grommet present at the access-point to the spare tire, as shown below, if applicable.



"Removal of the grommet"

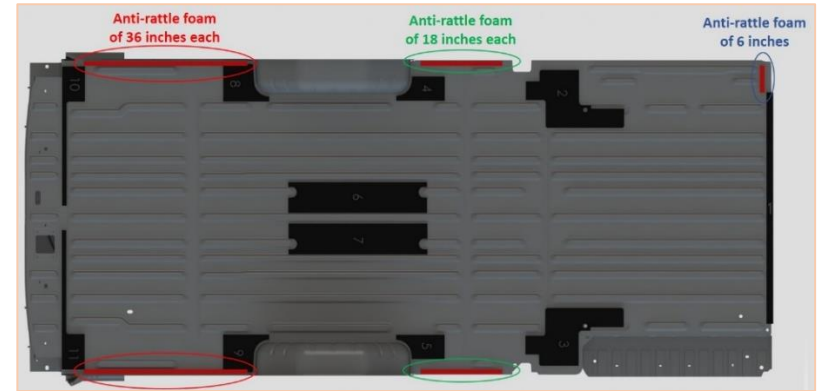
3. Peel-off the rear paper on the spacer foam and install the eleven pieces as per the layout shown in the picture below. Please note that the foam is shown in red color in the image below for easy identification. (ENLARGED IMAGE IS SHOWN ON PAGE # 6)



"EVA Spacer Foam's layout"

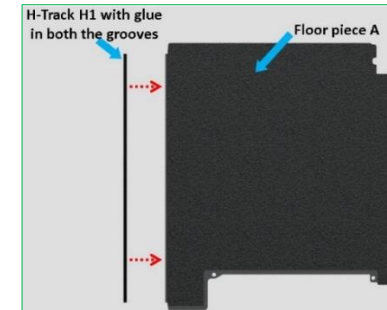
4. Separate the anti-rattle foam into five pieces – one of 6 inches, two of 18 inches and two of 36 inches at the perforations provided.

5. Peel-off the rear paper on the anti-rattle foam and install them as per their layout shown below. Please note that the foam is shown in red color in the image below for easy identification.



"Layout of Anti-Rattle Foam"

6. Squirt a thin line of glue in both the grooves of the 'front H-Track' (Part number : H1) along the length leaving a gap of 1 inch from either end of the H-Track to keep the glue from oozing out.
7. Align this H-Track (H1) with the rear edge of floor piece A, and using a rubber mallet, gently tap it into place so that the glue holds the H-Track onto the floor piece A.



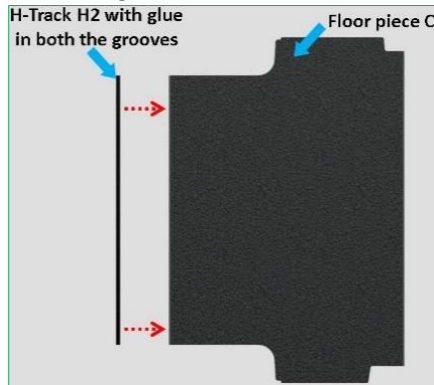
"Aligning H1 with Floor Piece A's rear edge"

8. Place this assembled floor piece A in the vehicle as shown in the picture below.



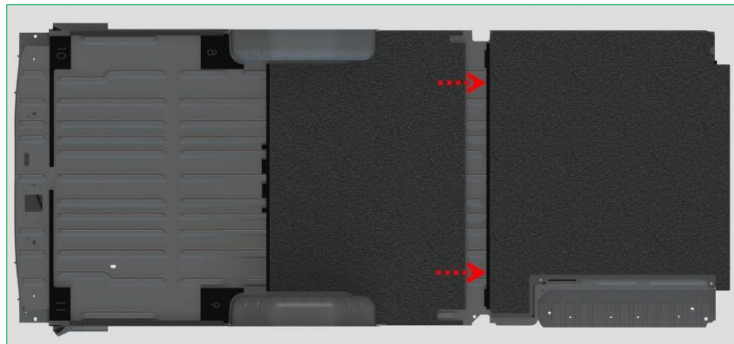
"Positioning of combined set of 'Floor Piece A and H1' in the vehicle"

9. Squirt a thin line of glue in both the grooves of the 'rear H-Track' (Part number : H2) along the length leaving a gap of 1 inch from either end of the H-Track to keep the glue from oozing out.
10. Align this rear H-Track (H2) with the rear edge of floor piece C, and using a rubber mallet, gently tap it into place so that the glue holds the H-Track onto the floor piece C.

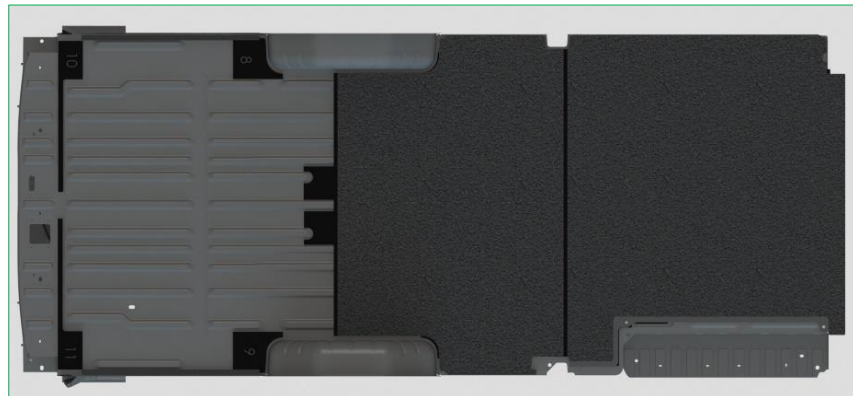


"Aligning H2 with rear edge of Floor Piece C"

11. Align this assembled floor piece C with the 'assembled floor piece A and H1' present in the vehicle, and gently tap on the rear H-Track (H2) towards the front of the vehicle so that a tight fit is obtained between these four parts of the kit.

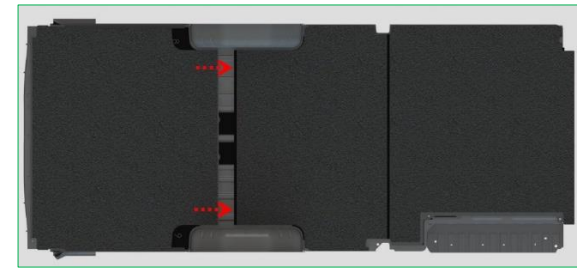


"Installing the set of 'Floor Piece C and H2' in the vehicle"



"View of Floor Piece A, H1, Floor Piece C and H2 installed in the vehicle"

12. Align the floor piece E with the rear H-Track (H2) present assembled with the other parts in the vehicle, and using a rubber mallet, gently tap the rear edge of floor piece E towards the front of the vehicle so that a tight fit is obtained between these five parts of the kit.

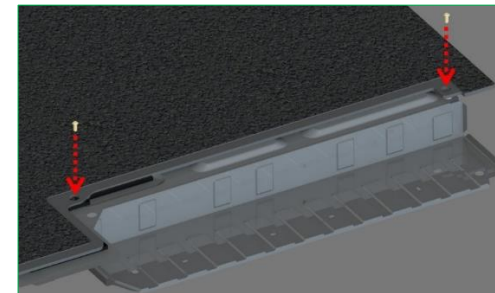


"Installing Floor Piece E in the vehicle"



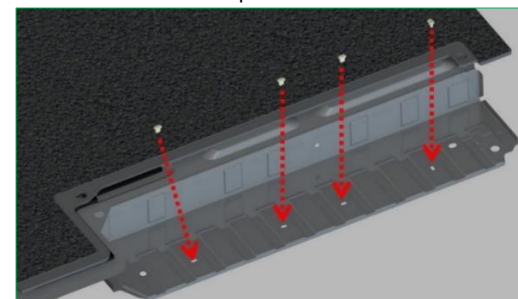
"View of Floor Piece A, H1, Floor Piece C, H2 and Floor Piece E installed in the vehicle"

13. Insert the two 'side-step push-in rivet inserts' (Part number : F70-082-0001_Side-step push-in rivet insert), at the two locations shown in the picture below.



"Location of the two Side Step Push-In Inserts"

14. Insert the four 'side-step screw inserts' (Part number : F70-082-0001_Side-step screw insert), at the four locations shown in the picture below.



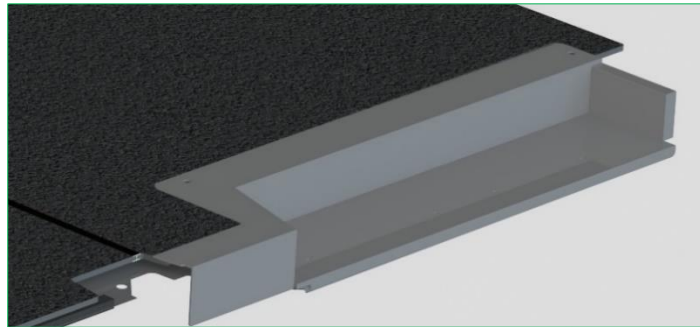
"Location of the four Side Step Screw Inserts"

15. Install the side scuff spacer (Part number : 000-135-6441) as shown in the picture below.



“Location of the Side Scuff Spacer”

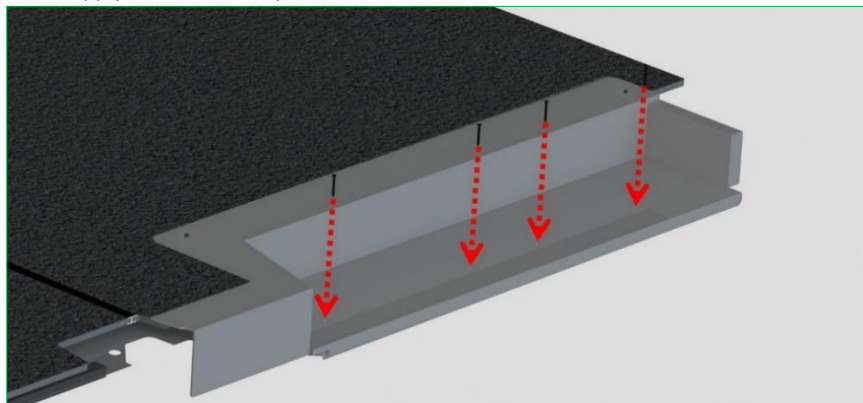
16. Position the heavy-duty side sill (Part number : F706-151-1011, or S1) as shown in the picture below, by aligning the four countersink holes present on the sill with the four screw inserts installed in step # 14.



“Heavy-duty side sill positioned in the vehicle”

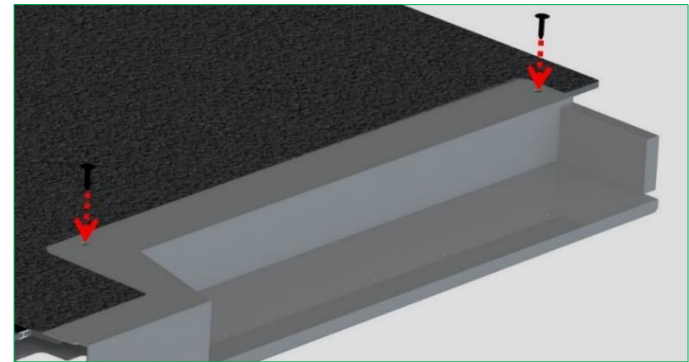
17. Fix the heavy-duty side sill using four flat head screws (Part number : FS2-063-125), at the locations shown in the picture below.

NOTE : Apply 2.5 N-m of torque to each screw.



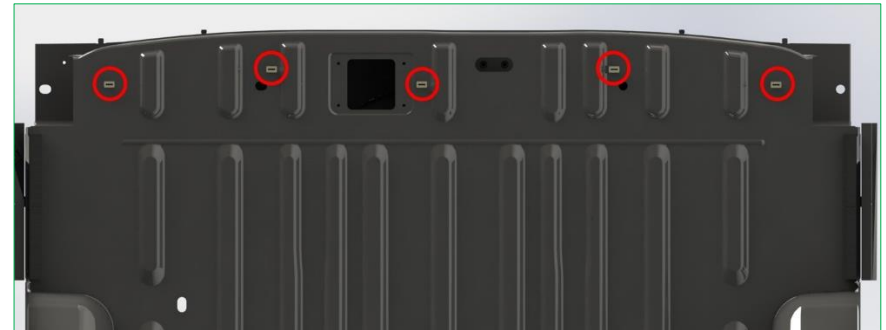
“Fixing the side sill using four flat head screws”

18. Installing the two side push-in rivets (Part number : F70-082-0001_Side step push-in rivet), at the locations shown in the picture below.



“Installing the two side step push-in rivets”

19. Insert the five ‘rear-step screw inserts’ (Part number : F70-082-0001_Rear step screw insert), at the five locations shown in the picture below.

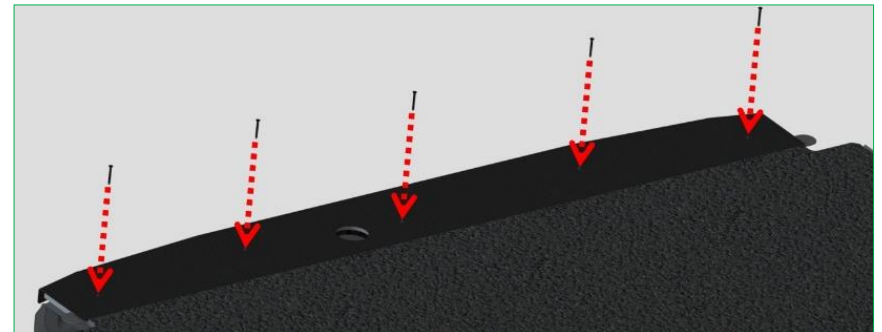


“Location of the five rear step screw inserts”

20. Position the heavy-duty rear sill (Part number : F708-151-1011, or S2) by aligning the five holes in the sill with the rear edge of the floor piece E.

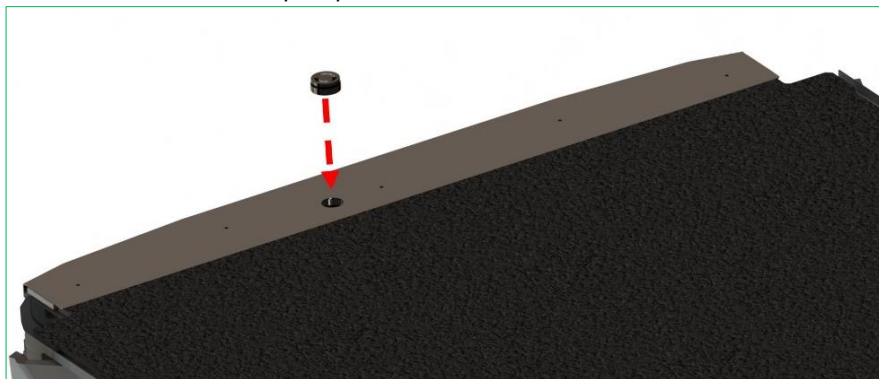
21. Install five flat head screws (Part number : FS2-063-125), at the locations shown in the picture below to fix the rear sill in-place.

NOTE : Apply 2.5 N-m of torque to each screw.



“Installing five flat head screws to secure the rear sill”

22. Re-install the grommet removed from the vehicle in Step # 2, if applicable. The rubber plug is to be installed on the heavy-duty rear sill as instructed below.

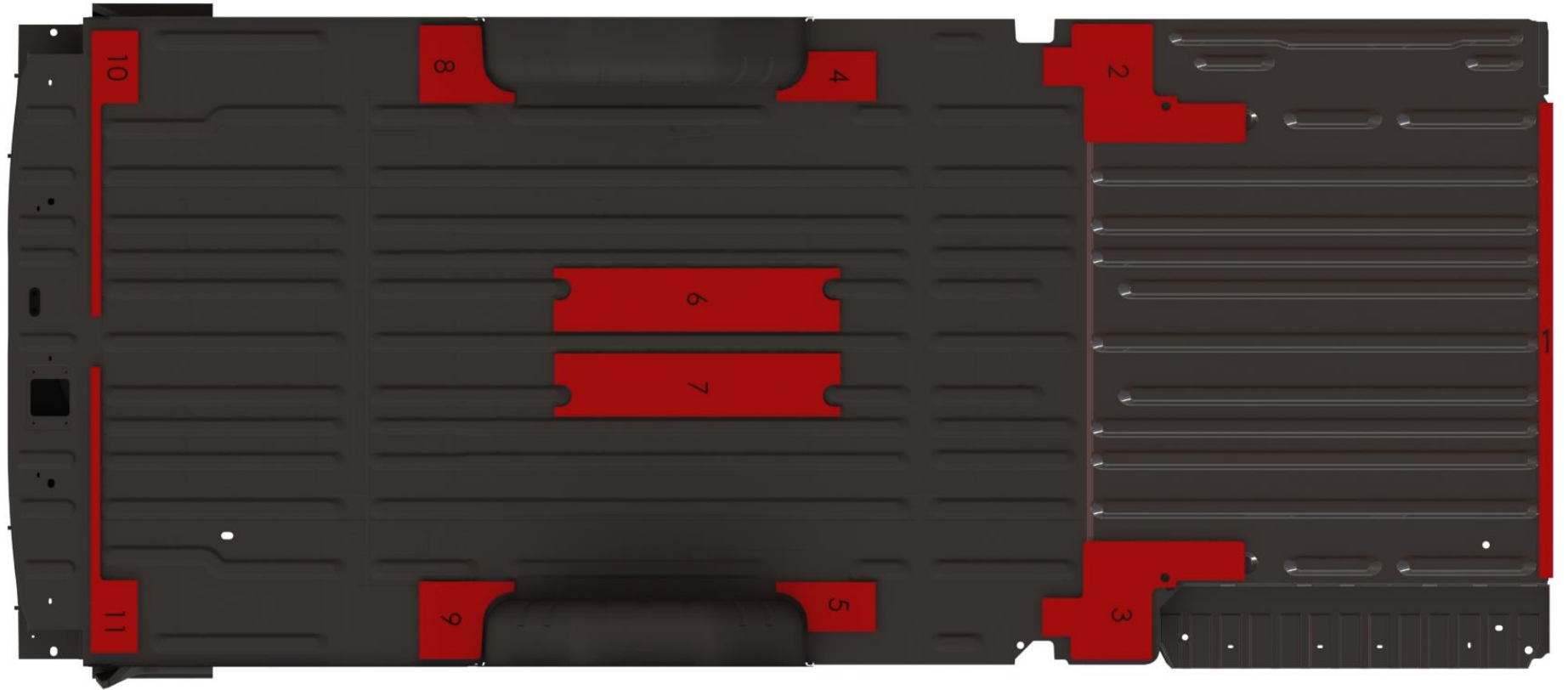


"Re-installing the grommet on the rear sill"

23. Re-install all the D-Rings that were removed from the vehicle initially.



"Fully installed floor kit"



Layout of EVA Spacer Foam Revision 2